

ZOOMLION TECHNOLOGY WITH INGENUITY AND CARE



THE WORLD'S LEADING EXCAVATOR INTELLIGENT MANUFACTURING FACTORY

ZOOMLION Smart City Earthmoving Machinery Park is an industry-leading intelligent and flexible excavator factory. From a piece of steel plate to an excavator, with high-precision welding process, highly reliable assembly process, high-level coating process and strict quality control, each excavator is delivered with ultimate quality.



Zoomlion Heavy Industry Science & Technology Co.,Ltd.

Add: Zoomlion Smart City Headquarters Building, No.613 Naqiu Road, Wangcheng District, Changsha, Hunan, China 410221
Email: earthmoving@zoomlion.com
Copyright© Zoomlion. All rights reserved. Reproduction and copying of any part of contents is not allowed for any purposes without Zoomlion's approval.
Note: Materials and specifications are subject to change without notice. Featured machines in photos may include additional equipment.



ZOOMLION COMPACT TRACK LOADER

ZT090V



VISION CREATES FUTURE

The ZOOMLION compact track loader provides you with outstanding performance, exceptional comfort, ease of maintenance, and superior durability.



OUTSTANDING PERFORMANCE



WELL-KNOWN BRAND ENGINE

- High-pressure common-rail system and diesel particulate filter (DPF).
- The high-pressure common-rail system electronically controls the timing and amount of fuel injected to ensure full combustion, improving fuel efficiency, and reducing engine noise.
- Equipped with exhaust gas recirculation technology and a DPF, the ZT090V meets the U.S. EPA Tier 4 Final and EU Stage V emission standards.
- Powerful and reliable 47.9 kW engine gets the job done with ease.



AUTOMATIC RESETTING FOOT-OPERATED THROTTLE

- The foot-operated throttle can be used to increase engine speed when strong power is needed transitorily.



10-GEAR KNOB FIXED THROTTLE

- Constant engine speed can be maintained during operations such as cold milling, trenching, sweeping, snow removal, and drilling.

LARGE GROUND CLEARANCE AND DEPARTURE ANGLE

With a large ground clearance of **230 mm** and a small ground specific pressure of **34 kPa**, the ZT090V easily crosses large obstacles, allowing it to drive on more rugged surfaces and work in more complex environments.

Maximum travel speed in low gear

11.5 km/h

Maximum travel speed in high gear

16.6 km/h

(OPTIONAL)

Rated load

917 kg

Overturning load

2620 kg



Ground Clearance: **230 mm**

Departure Angle: **30 °**

Gauge of Tracks: **1363 mm**

Track Ground Length: **1420 mm**

UNIQUE VERTICAL LIFTING ARM

Different from the radial lifting with an arc-shaped movement trajectory, the unique linkage structure of the vertical lifting technology enables the lifting trajectory at the front end of the lift arm to be approximately vertical. This reduces the frequent forward and backward movements of the machine. The unloading operation can be completed on the spot, and it has more advantages when carrying out material loading and hauling in narrow indoor spaces, such as in warehouses and during construction inside buildings.



The boom features a bionic design of a "down-curved willow leaf".

This design reduces the lateral blind-spot area of the driver by **1482** mm.



The side window adopts a patented design structure with a small window on an integrated glass.

Compared with similar products, the visual field is improved by **35%**.

Maximum dump reach:
830 mm

Maximum dump height:
2390 mm

Bucket hinged pin height:
3068 mm

The maximum height dump angle of **42°** results in faster unloading

Compared with the same type of products, the loading capacity is increased by **15%** and the unloading height is increased by **9%**

STABLE HYDRAULIC SYSTEM

Internationally renowned brand core components

Hydraulic core components are from internationally renowned brands, which provides a more stable hydraulic system.

International standard hydraulic interfaces for attachment

Standard 1/2-inch male and female connectors and 3/8-inch male connectors.

Proportional control of attachment flow

Proportional foot-operated valves are used to control the flow output of the attachment, which makes it more accurate.

Optional high-flow attachment system

With the option of a high-flow system, the attachment flow system has been increased from **76 L/min** to **118 L/min** to provide strong support for attachment work.

Optional automatic levelling system

No need to manually adjust the angle during operation to maintain the attachment position when lifting the attachment.

EXCEPTIONAL COMFORT

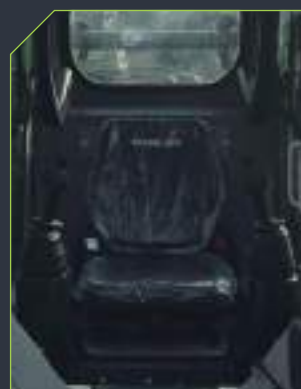
Excellent 360° Visibility

The bucket can be seen right from the seat, enhancing the safety during the working process.



Pressurized cab

The pressurized cab effectively isolates dust, enabling you to work in a comfortable environment with minimized distractions, lower noise levels, and reduced fatigue even during extended work periods.



Optional Suspension Seat

An even more outstanding suspension seat allows you to maintain an excellent working condition.



Large-screen Monitor

A standard large-screen monitor results in friendly human-machine interaction. It can remind maintenance information and fault information in real time.



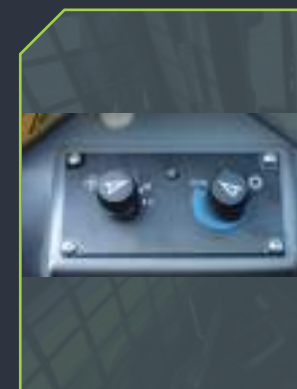
Standard Cupholder

A cupholder under the right armrest makes it easy to place a cup of water to quench your thirst when working.



Reading Lamp

A standard reading lamp makes it easy to view and read inside the cab.



Optional Air-conditioning configuration

It provides superior cooling and heating all year round.



Ample Legroom

The spacious cab offers ample legroom to help reduce operator fatigue.



12v Power Output

With a maximum power output of 120 W, it can charge mobile phones and power other small electronic devices.

MULTIPLE ATTACHMENTS

The ZT090V is adaptive to 200 kinds of attachments with different functions, meeting the operation requirements in various applications such as construction projects, site cleaning, winter snow removal, garden maintenance, agricultural production, and industrial logistics.



SWEeper



SCRAPER



BULLDOZER



GRIPPING FORK 1



GRIPPING FORK 2



TRENCHER



SNOW BLOWER



4-IN-1 BUCKET



SNOW PUSHER



BEVEL SWEEPER



COMPACTOR

International standard quick coupler interface, compatible to attachments from different manufacturers.

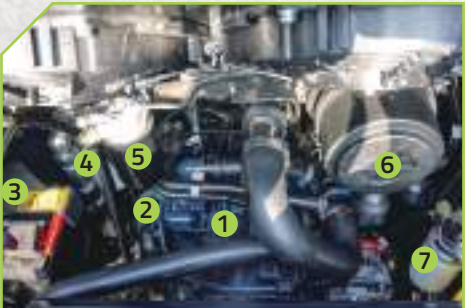
EASE OF MAINTENANCE

Long service intervals reduce frequent maintenance, allowing oil changes every 500 hours.



Opening the rear door and the upper cover to access to all components for daily inspections.

- 1 Engine injectors
- 2 Engine oil level gauge
- 3 Battery
- 4 Hydraulic oil filter
- 5 Fuel filter
- 6 Air filter
- 7 Fuel-water separator
- 8 Oil filter



EXCELLENT SAFETY



Optional cab side guard
The side guard protects your lateral safety.



FOPS/ROPS cab
A cab certified for FOPS/ROPS provides protection in the event of unforeseen rollovers and falling objects.



Optional turn signals and exterior rearview mirrors
They do not move with the lifting arm, making it easy to observe the situation at the back of the body at any time and keeping you safe.



Optional reversing camera
Its large display at the front of the cab and the high-definition camera at the rear ensure a complete view of the machine's rear door.



Optional fire extinguisher
Designed layout, does not occupy the operating space, convenient and easy to contact, prevent emergency, protect the driver.



Optional license plate holder and license plate lamp at the rear end
They make it easy to identify your vehicle.

LIST OF OPTIONS

No.	Items	ZT090V
1	Adjustable Suspension Seat	●
2	Hydraulic System for Attachments	●
3	Quick-Coupler	●
4	Back-up Alarm	●
5	Hand-and-Foot Control Mode	●
6	Horn in ISO Control Mode	●
7	0.44 m³ Bucket	●
8	Integrated Instrument	●
9	Safety Support of Lift Arm	●
10	Front and Rear Working	●
11	Lights and Driving Lights	●
12	Safety Interlock Device,	●
13	Two-Point Seat Belt	●
14	Safety Bar	●
15	Built-in Rearview Mirror	●
16	320mm Standard Track	●
17	English Sign	●
18	Enclosed Cab (Meeting the safety requirements of ROPS and FOPS for CE certification; interior trim, left and right side windows, skylight, rear window and front door; power interface; windshield wiper, cup holder, reading lamp)	●
19	Boom Floating Function	●
20	Cab Heater	○
21	Air Conditioner	○
22	400mm Track	○
23	Rotating Beacon	○
24	Electronic-Control Wiring Harness	○
25	for Attachments	○
26	Rearview Camera	○
27	GPS	○
28	Removable Blade Plate	○
29	Removable Bucket Teeth	○
30	Safety Hammer	○
31	Fire Extinguisher	○
32	Emergency Stop Switch	○
33	Exterior Rearview Mirror	○
34	Quick Coupler for Attachments	○
35	Dust-Proof Cover	○
36	Automatic Bucket Leveling	○
37	Side Mesh Guard of Cab	○
38	External Counterweight	○
39	High-Flow System	○
40	Two-Speed	○
41	Traveling Motor	○
42	Turn Signal Light + Exterior Rearview Mirror	○
43	License Plate Bracket + License Plate Lamp	○
44	Hydraulic Quick Coupler	○

● STANDARD ○ OPTIONAL

MAIN PARAMETERS

Item		ZT090V
A	Max. Operating Height	3855 mm
B	Bucket Hinge Pin Height	3068 mm
C	Overall Height (To Cab Top)	2035 mm
D	Max. Horizontal Height of Bucket Bottom	2901 mm
E	Overall Length (Without Bucket)	2636 mm
F	Overall Length (With Bucket)	3364 mm
G	Bucket Tilting Angle at Maximum Height	42 °
H	Max. Dump Height	2390 mm
J	Dump reach	830 mm
K	Bucket Retracting Angle at Flat Ground	24 °
L	Track Ground Length	86 °
M	Ground Clearance	1420 mm
Q	Departure Angle	30 °
P	Front Turning Radius (Without Bucket)	230 mm
R	Front Turning Radius (With Bucket)	1322 mm
S	Rear Turning Radius	2050 mm
T	Tail Length	1604 mm
U	Track Edge Width	788 mm
W	Bucket Edge Width	1683 mm

Dimensions and Work Range Diagram

