

# ZOOMLION TECHNOLOGY WITH INGENUITY AND CARE



## The world's leading excavator intelligent manufacturing factory

Zoomlion Smart City Earthmoving Machinery Park is an industry-leading intelligent and flexible excavator factory. From a piece of steel plate to an excavator, with high-precision welding process, highly reliable assembly process, high-level coating process and strict quality control, each excavator is delivered with ultimate quality.



Zoomlion Heavy Industry Science & Technology Co.,Ltd.

Add: No.361, South Yinsen Road, Changsha, Hunan Province, P.R.China 410013      Email: earthmoving@zoomlion.com  
Copyright©2025 Zoomlion. All rights reserved. Reproduction and copying of any part of contents is not allowed for any purposes without Zoomlion's approval.  
Note: Materials and specifications are subject to change without notice. Featured machines in photos may include additional equipment.



# ZOOMLION 21-TONNAGE CRAWLER HYDRAULIC EXCAVATOR

ZE225G pro





# VISION CREATES FUTURE

ENGINE POWER:  
**140 kw @ 2050 rpm**

OPERATING WEIGHT:  
**22500 kg**

BUCKET CAPACITY RANGE:  
**1.0-1.1 m<sup>3</sup>**





# SAFE AND COMFORTABLE



Cup holder



Storage box



Cigarette lighter



AUX port



Push start



Large size touch screen

The new generation of G series cab is spacious and bright, with a large area of reinforced glass, and the glass transmittance is increased by more than 11%;  
Optional ROPS certified cab for greater safety.



The rear view is clearly visible on the monitor thanks to the rear-view camera as standard feature. Travel operation is easier and safer.



The large-stroke air suspension seat is suitable for drivers of different heights.



The highly integrated multifunctional handle can be adapted to different attachments, which effectively enhances the ease of operation.



High power air conditioner with optimized air duct.

# ATTACHMENTS

Excavators can be used for different functions by installing different attachments, further improving efficiency.  
Better stability and performance can be achieved by installing Zoomlion attachments. Attachments can be easily replaced by using Zoomlion quick coupler.



Please contact with ZOOMLION for more available attachments.

# VERSATILE



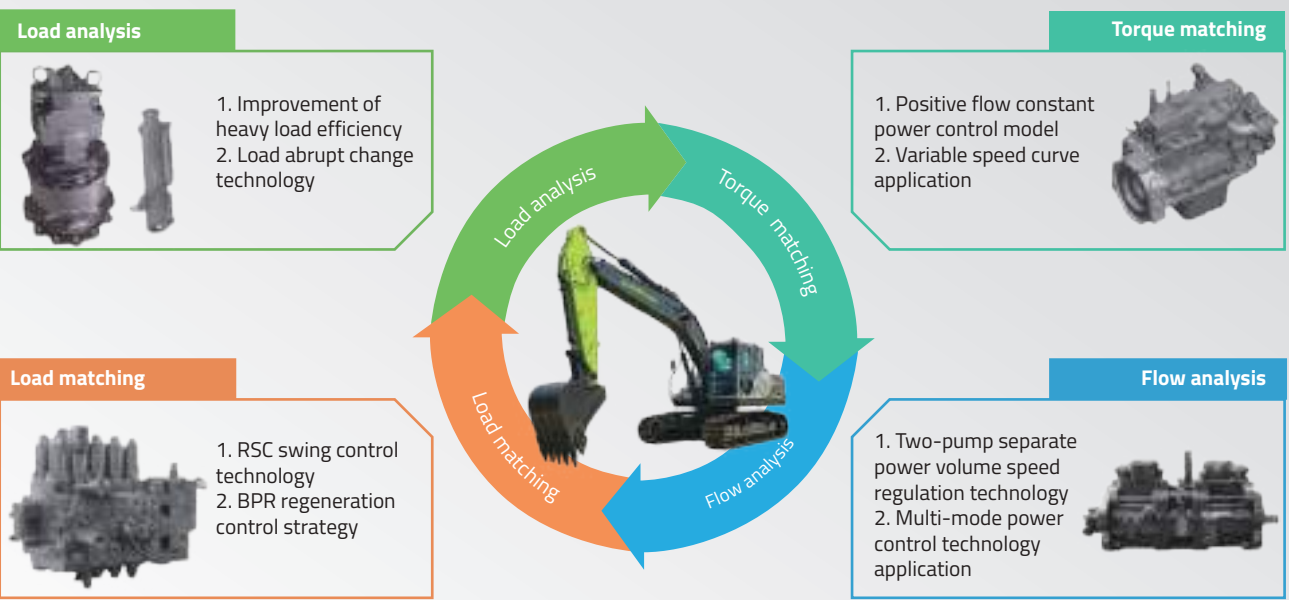
Standard high efficient reinforced bucket of 1.1m<sup>3</sup> capacity;  
Loading efficiency is high because soil is hardly stuck on it;  
durable with enhanced design;  
Can be equipped with rock teeth for higher abrasion resistance.



The optional 1.0m<sup>3</sup> rock bucket is powerful during digging by greatly reducing the cutting resistance of bucket teeth;  
The bucket is more durable by reducing the wear and impact of the rock on the bottom of the bucket. The stability of the whole machine is improved, and the operation is more comfortable.

Bucket type	Capacity (m³)	Applicable material density (kg/m³)	Advice for choice
Reinforced bucket	1.1	1500	Digging light or loose materials
Rock bucket	1.0	1800	High abrasion applications like quarry or rock

# ENERGY SAVING AND EFFICIENT



ZE225G pro adopts a positive flow control system independently developed by ZOOMLION, With the application of the load analysis, load matching, flow analysis and torque matching technologies, the work efficiency of large-scale digging and loading operation is improved while the fuel consumption is greatly reduced, creating value for customers.

High power engine

Large displacement pump

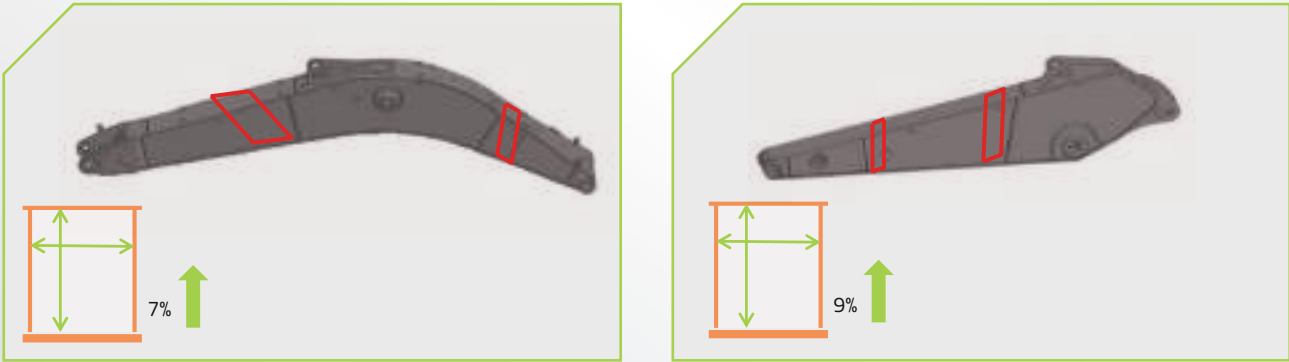
Large flow diameter main control valve

Large capacity bucket



# RELIABLE AND DURABLE

The boom and arm are designed with large cross section. The overall cross section of the boom and arm is increased by 7% and 9% respectively.The stress bearing capacity is greater with larger cross section; The hinge joints adopt high-strength forging structure to ensure high strength and long service life.



Robot welding

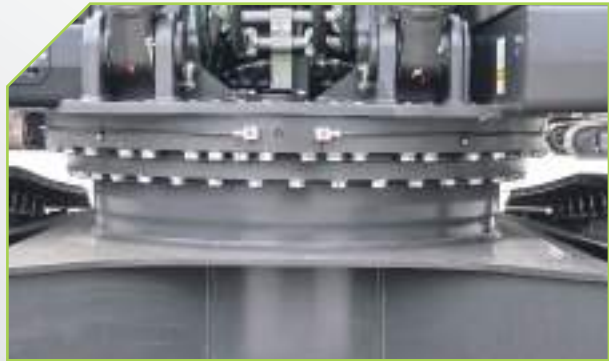
Advanced welding process helps to improve the quality of structural components.



The track roller is used as carrier roller. The service life of the track roller is longer with higher bending and torsional resistance since it's supported on both sides. The track derailment is avoided more effectively.



Engine fuel filters, oil filter, air cleaner, hydraulic oil pilot filter and A/C filter are easily accessible at ground level, achieving "one-stop" maintenance on the ground.



Centralized lubrication of slewing bearing and boom make it more convenient for greasing.

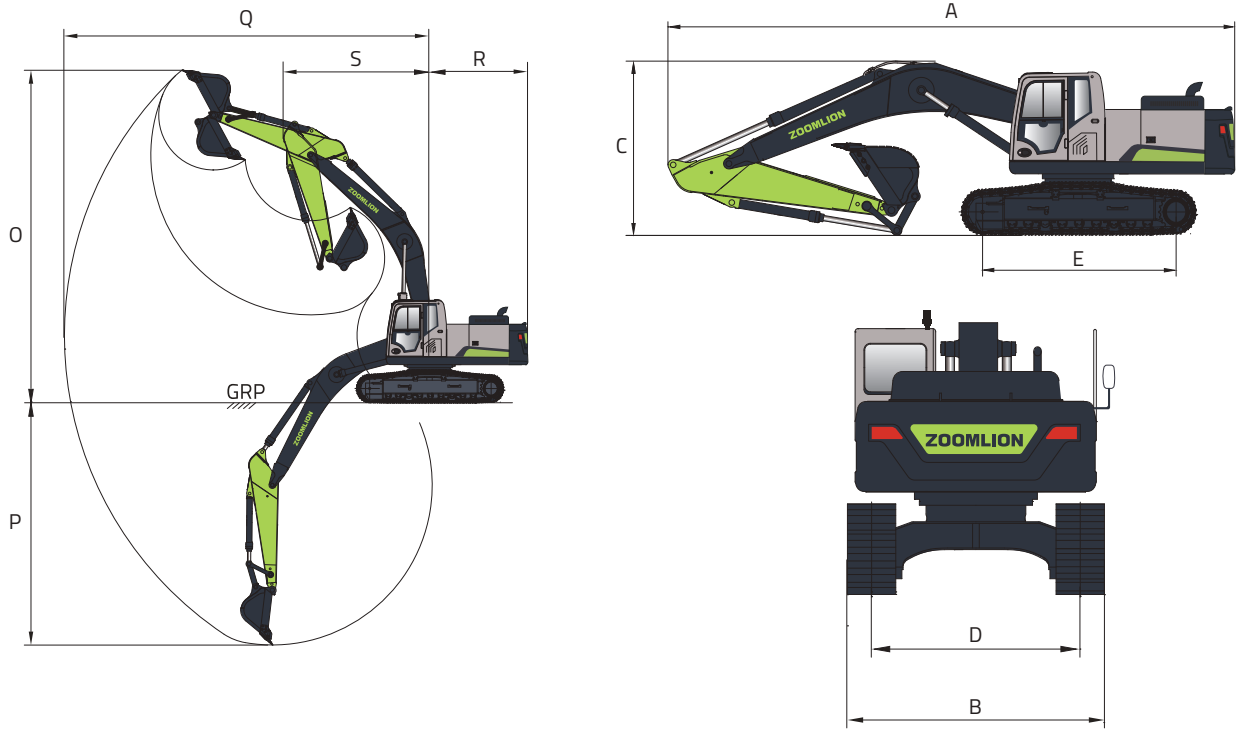


The engine compartment is large, and the hood is divided into three sections, which makes it easier to open. Inspection and maintenance of the engine is convenient.

TECHNICAL SPECIFICATIONS

ZE225G Pro	
ENGINE	
Brand	Cummins
Model	QSB7
Rated power	140kw@2050rpm
Displacement	6.7 L
HYDRAULIC SYSTEM	
Main pump	Two variable displacement piston pumps Maximum flow: 2×221 L/min
Pilot pump	One gear pump Maximum flow: 22 L/min
Maximum pressure - Equipment	34.3 MPa
Maximum pressure - Swing	25.5 MPa
Maximum pressure - Travel	34.3 MPa
Maximum pressure - Boost	37.3 MPa
Maximum pressure – Pilot system	3.9 MPa
UPPER FRAME	
Maximum swing speed	12 r/min
Maximum swing torque	77.6 kNm
UNDERCARRIAGE	
Number of carrier rollers (each side)	2 (Two sides supported track rollers)
Number of track rollers (each side)	9
Number of track guide (each side)	2
Travel speed (high)	5.4 km/h
Travel speed (low)	3.4 km/h
Maximum drawbar pull	210 kN
Gradeability	70%
SERVICE REFILL CAPACITIES	
Fuel tank	360 L
Engine coolant	30 L
Engine oil	26 L
Swing drive	5.3 L
Final drive (each side)	5 L
Hydraulic system	230 L
Hydraulic tank	130 L
WORK EQUIPMENT	
Boom length	5700 mm
Arm length	2925 mm

ZE225G Pro	
OVERALL DIMENSIONS	
A Overall length	9650 mm
B Overall width	2990 mm
C Overall height	3150 mm
D Track gauge	2390 mm
E Length of track on ground	3660 mm
WORKING RANGE	
O Maximum digging height	10010 mm
P Maximum digging depth	6660 mm
Q Maximum digging reach	9900 mm
R Tail swing radius	2935 mm
S Front minimum swing radius	3200 mm



STANDARD & OPTIONAL FEATURES

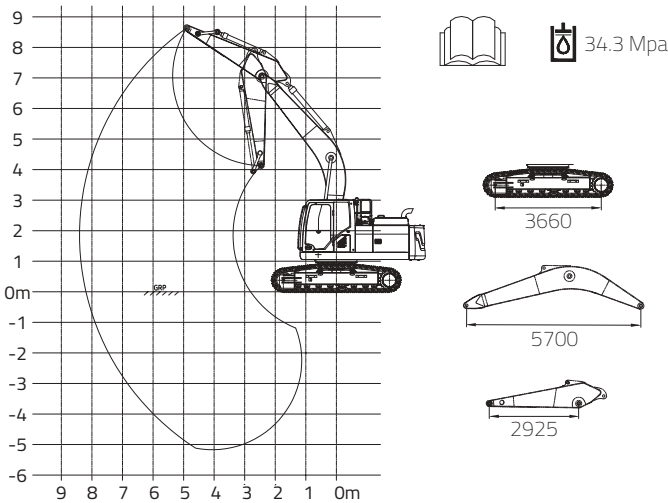
Category	Features	ZE225G Pro
Powertrain	Air cleaner	●
	Swirl type air pre-cleaner	●
Hydraulic system	Attachments plumbing	○
	Quick coupler plumbing	○
	Hammer plumbing	○
Cab	ROPS	○
	Mesh guard	○
	Skeleton guard	○
	Fire extinguisher	●
	Mechanical suspension seat	●
	Air conditioner	●
	Sunshade curtain	○
Undercarriage	600mm track	●
	700mm track	○
	800mm track	○
Electrical system	Acousto-optic alarm	○
	Emergency stop	●
	24V DC outlets	●
	Rear view camera	●
	Cab front light	● 2 pcs
	Boom light	● 2 pcs
	Upper frame light	● 1 pc
	Refilling pump	○
	GPS	●
	AM/FM radio	●
Others	Cylinder sleeve	○
	Cab rear mirror	● 1 pc
	Handrail rear mirror	● 1 pc

● Standard    ○ Optional

LIFT CAPACITY

Do not attempt to lift or hold any load that is greater than these rated values at their specified lift-point radius and height.

The lift point is located at the centreline of the bucket pivot mounting pin on the arm.



LPH	Rated lift capacity (kg)												
	LPR										Lift capacity at maximum radius		
	1.5m		3.0m		4.5m		6.0m		7.5m				
m	End	Side	End	Side	End	Side	End	Side	End	Side	End	Side	mm
7.5							*4238	*4238			*3509	*3509	6200
6.0							*4672	*4672			*3280	*3280	7300
4.5					*5918	*5918	*5174	*5174	*4853	3770	*3241	*3241	7970
3.0					*7620	*7620	*5961	5100	*5191	3654	*3338	3099	8320
1.5					*9196	7230	*6772	4840	5429	3524	*3516	2987	8395
Grade			*7090	*7090	*1006	6930	*7349	4650	5323	3427	*3909	3041	8190
-1.5	*7495	*7495	*1123	*1123	*10164	6860	7303	4570	5299	3404	*4684	3301	7685
-3.0	*11723	*11723	*13515	13334	*9518	6930	*7056	4617			*5934	3922	6820
-4.5			*10796	*10796	*7706	7190					*6088	5542	5415

Capacities marked with an asterisk (\*) are limited by hydraulic capacities. See Note 2.

- The mass of slings and any auxiliary lifting devices shall be deducted from the rated load to determine the net load that may be lifted.
- Lift capacities are based on the machine standing on a firm, uniform supporting surface. The user shall make allowances for job conditions such as soft or uneven ground.
- The operator should be fully acquainted with the Operator's Manual and the Operating Safety Manual furnished by the manufacturer before operating the machine.
- NOTE 1 Lift capacities shown are without the power boost feature engaged.
- NOTE 2 Lift capacities shown do not exceed 75% of minimum tipping loads or 87% of hydraulic capacities.
- NOTE 3 The least stable position is over the side.
- NOTE 4 Lift capacities apply only to the machine as originally manufactured and normally equipped by the manufacturer.
- NOTE 5 The total mass of the machine is 22000kg. Included in this mass are 600mm triple grouser shoes, 5.7m boom, 2.925m arm, 3950kg counterweight, all operating fluids and a 75kg operator.
- NOTE 6 Lift capacities are in compliance with ISO 10567:2007.



**VISION  
CREATES  
FUTURE**

