

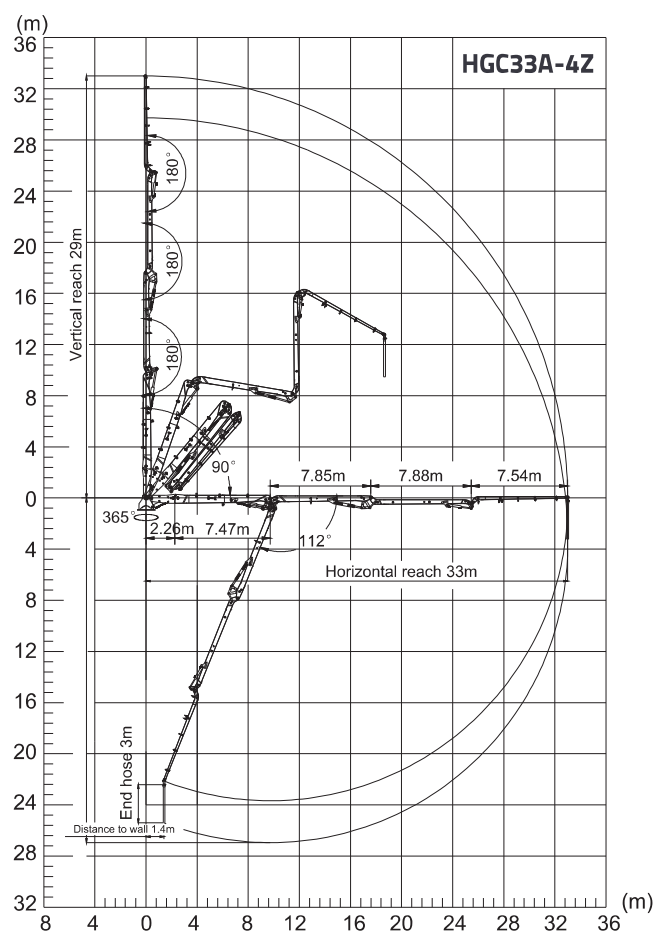
HGC33A-4Z



Automatic Climbing System(Choose one)

Main features

- Wide application: HGC33A-4Z used in free standing or inner climbing to meet various jobsites.
- Precise control and high reliability: HGC33A-4Z is based on ZOOMLION boom design and tower crane design technology, ensuring stable performance of machine. Control of all boom functions and the climbing device via remote control. Electronic-hydraulic proportional control technology enables precise control and convenient operations.
- Flexible and quick setup: with humanized design philosophy, we take every details into consideration to facilitate quick and convenient install and uninstall of the machine.
- Easy climbing operation: climbing is carried out simply and quickly by two lifting cylinders in a convenient method with the help of the hydraulics of the boom unit.
- HGC33A-4Z multiple unit valve is from German HAWE Company in hydraulic system, which can make several executive components work in the same time. It is with infinite speed variation, and the running speed is no relation with the load. All can reduce the concussion of inverting, turning on and closing for inverting valves. So the boom can work more steadily.



Vertical reach	33m	
Horizontal reach	33m	
Depth of reach	26.3m	
Free standing height	24m	
Arms	4	
Folding system	Z	
Rotation range	365°	
Pipeline	φ 133 x4	
End hose length	3m	
Control mode	Remote	
Column mode	0.75m x0.75m	
Climbing mode	Two lifting cylinder	
Column	2 section	3 section
The heaviest single part	5700kg	4200kg
Power input	15kW	
Power supply	380V/50HZ	

Technical data and characteristic subject to modifications without notice.

